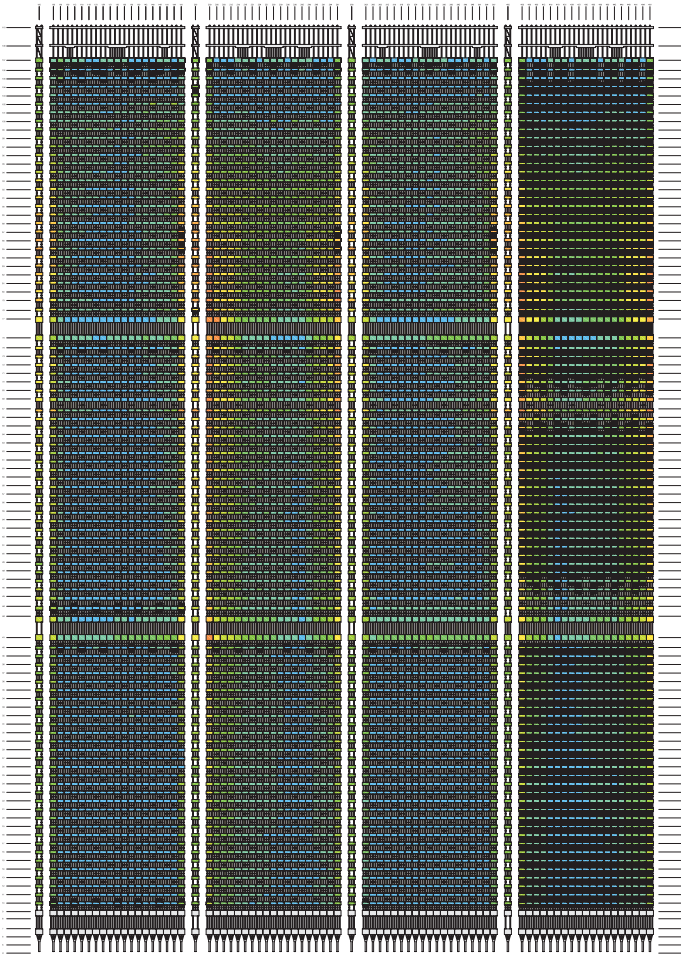
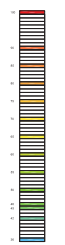


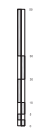
WORLD TRADE CENTER TOWER A



PANEL TYPES



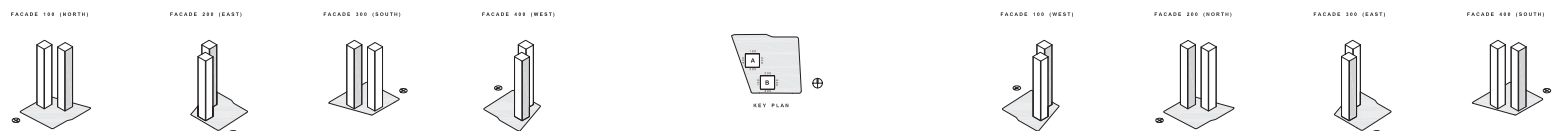
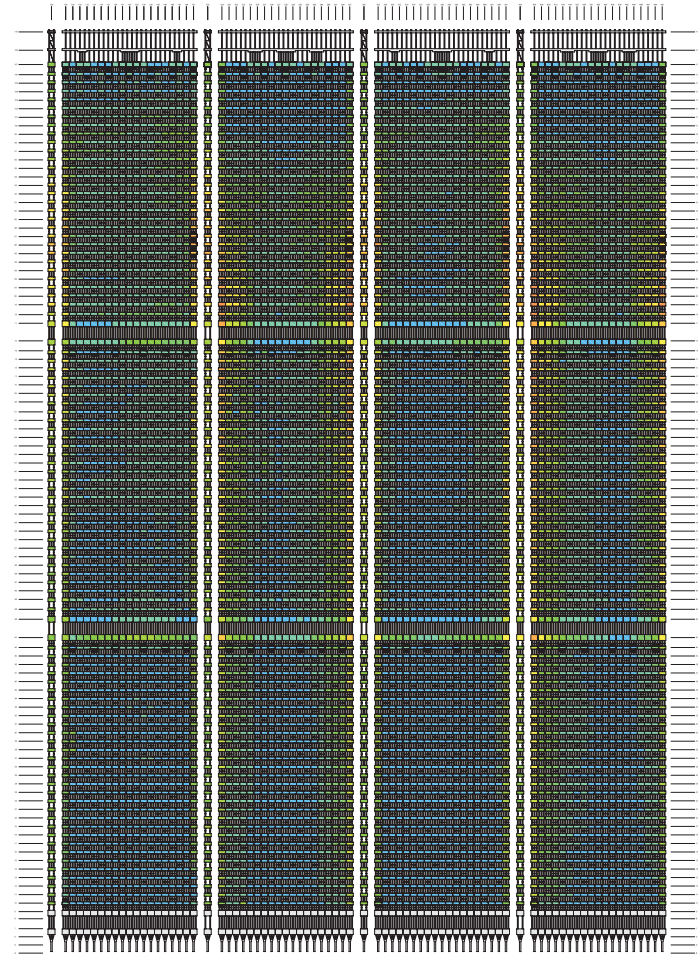
STRUCTURAL STEEL GRADES
YIELD STRENGTH (KSI)



SCALE = 1 : 400

DIAGRAM DESCRIPTION
 THIS DIAGRAM SHOWS THE STRUCTURAL STEEL GRADES USED IN THE FACADES OF TOWERS A AND B. THE GRADES ARE INDICATED BY THE COLOR OF THE PANELS. THE YIELD STRENGTH OF EACH GRADE IS LISTED IN THE CHART TO THE RIGHT. THE GRADES ARE: A572-50 (BLUE), A572-60 (GREEN), A572-70 (YELLOW), A572-80 (ORANGE), A572-90 (RED), A572-100 (PURPLE), A572-110 (PINK), A572-120 (BROWN), A572-130 (BLACK), A572-140 (WHITE), A572-150 (GRAY), A572-160 (DARK GRAY), A572-170 (MEDIUM GRAY), A572-180 (LIGHT GRAY), A572-190 (VERY LIGHT GRAY), A572-200 (OFF-WHITE). THE GRADES ARE USED IN VARIOUS COMBINATIONS TO ACHIEVE THE FACADE DESIGN. THE GRADES ARE LISTED IN THE CHART TO THE RIGHT.

WORLD TRADE CENTER TOWER B



WORLD TRADE CENTER TOWER A AND B STRUCTURAL STEEL GRADES
 (DIAGRAM 2004)
 ENGINEER/DESIGNER: ROBERTSON (ROBERTSON, DOLLENS, HELLE, & JACKSON)
 ARCHITECT: HOK/SONOHE SIRTANO

DESIGNED BY: HOK/FRANCIS AND TAYLOR; ENGINEERED BY: ROBERTSON (ROBERTSON, DOLLENS, HELLE, & JACKSON); ARCHITECT: HOK/SONOHE SIRTANO; SCALE: 1/400; DATE: 08/01/03; PROJECT: WORLD TRADE CENTER TOWER A AND B; SHEET: 01-01-01